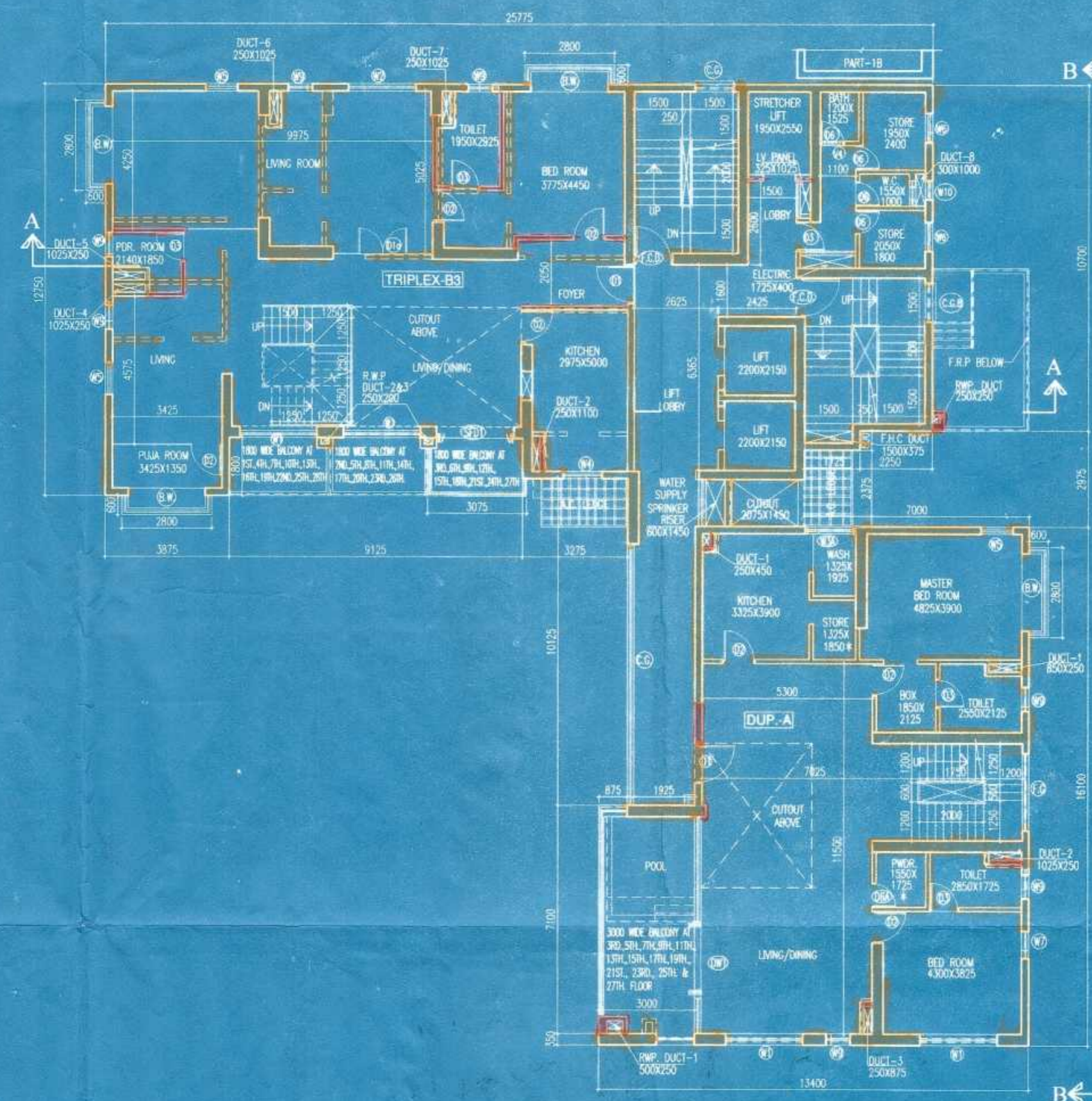
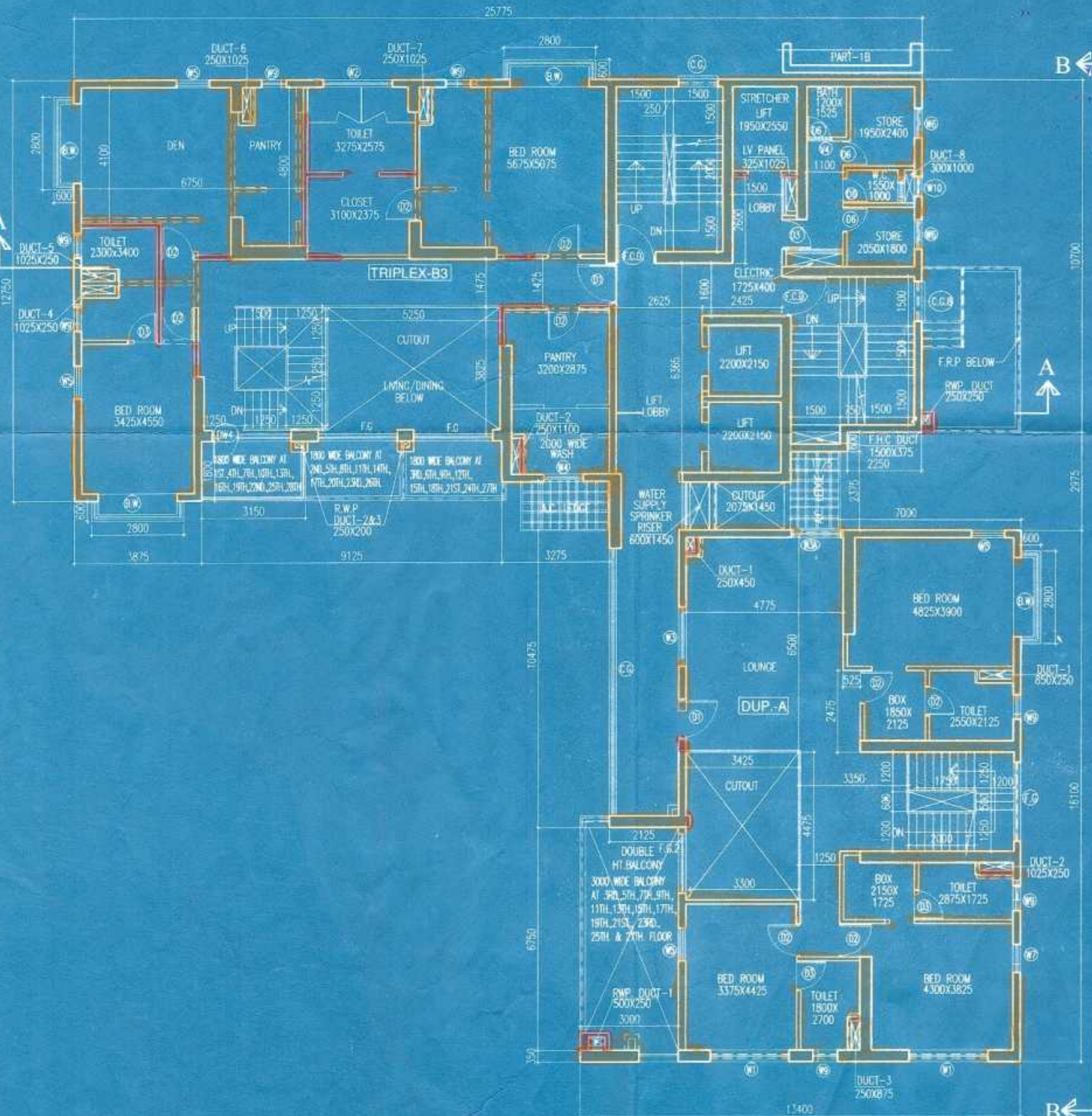


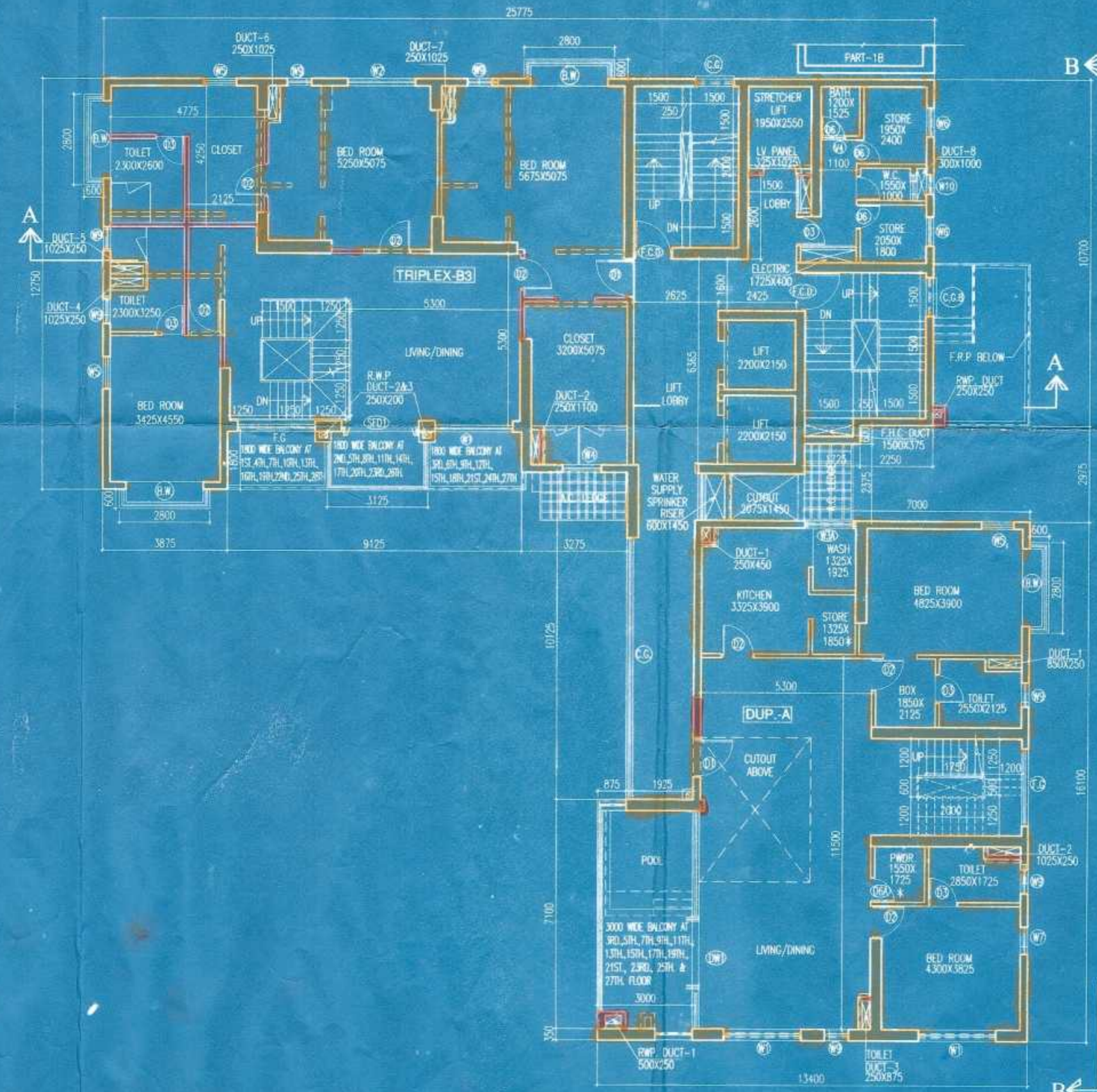
14TH. FLOOR PLAN



15TH. FLOOR PLAN



16TH. FLOOR PLAN



17TH. FLOOR PLAN

SCHEDULE OF DOORS & WINDOWS			
NO	SILL	LINTEL	SIZE
D01	-	2450	750X2450
D02	150	2450	2400X2300
D03	150	2450	2100X 2300
D04	150	2150	1000X 2150
D05	150	2450	1800X 2300
D06	150	2450	1500X 2300
D07	150	2450	1200X 2300
D08	150	2450	850X 2300
D09	150	2450	1000X2300
D10	150	2450	900X1100
D11	150	2450	300X1500
D12	150	2450	300X1700
D13	150	2450	850X 2300
D14	150	2450	750X2300
D15	150	2450	600X1100
D16	150	2450	600X1500
D17	150	2450	600X1700
D18	150	2450	850X 2300
D19	150	2450	1000X2300
D20	150	2450	1200X2300
D21	150	2450	1000X2300
D22	150	2450	1000X2300
D23	150	2450	1200X2300
D24	150	2450	1200X2300
D25	150	2450	1200X2300
D26	150	2450	1200X2300
D27	150	2450	1200X2300
D28	150	2450	1200X2300
D29	150	2450	1200X2300
D30	150	2450	1200X2300
D31	150	2450	1200X2300
D32	150	2450	1200X2300
D33	150	2450	1200X2300
D34	150	2450	1200X2300
D35	150	2450	1200X2300
D36	150	2450	1200X2300
D37	150	2450	1200X2300
D38	150	2450	1200X2300
D39	150	2450	1200X2300
D40	150	2450	1200X2300
D41	150	2450	1200X2300
D42	150	2450	1200X2300
D43	150	2450	1200X2300
D44	150	2450	1200X2300
D45	150	2450	1200X2300
D46	150	2450	1200X2300
D47	150	2450	1200X2300
D48	150	2450	1200X2300
D49	150	2450	1200X2300
D50	150	2450	1200X2300
D51	150	2450	1200X2300
D52	150	2450	1200X2300
D53	150	2450	1200X2300
D54	150	2450	1200X2300
D55	150	2450	1200X2300
D56	150	2450	1200X2300
D57	150	2450	1200X2300
D58	150	2450	1200X2300
D59	150	2450	1200X2300
D60	150	2450	1200X2300
D61	150	2450	1200X2300
D62	150	2450	1200X2300
D63	150	2450	1200X2300
D64	150	2450	1200X2300
D65	150	2450	1200X2300
D66	150	2450	1200X2300
D67	150	2450	1200X2300
D68	150	2450	1200X2300
D69	150	2450	1200X2300
D70	150	2450	1200X2300
D71	150	2450	1200X2300
D72	150	2450	1200X2300
D73	150	2450	1200X2300
D74	150	2450	1200X2300
D75	150	2450	1200X2300
D76	150	2450	1200X2300
D77	150	2450	1200X2300
D78	150	2450	1200X2300
D79	150	2450	1200X2300
D80	150	2450	1200X2300
D81	150	2450	1200X2300
D82	150	2450	1200X2300
D83	150	2450	1200X2300
D84	150	2450	1200X2300
D85	150	2450	1200X2300
D86	150	2450	1200X2300
D87	150	2450	1200X2300
D88	150	2450	1200X2300
D89	150	2450	1200X2300
D90	150	2450	1200X2300
D91	150	2450	1200X2300
D92	150	2450	1200X2300
D93	150	2450	1200X2300
D94	150	2450	1200X2300
D95	150	2450	1200X2300
D96	150	2450	1200X2300
D97	150	2450	1200X2300
D98	150	2450	1200X2300
D99	150	2450	1200X2300
D100	150	2450	1200X2300

TIVOLI PARK APARTMENTS (P) LTD.  
*Signature*  
 Director

CERTIFICATE OF STRUCTURAL ENGINEER  
 THIS IS TO CERTIFY THAT THE STRUCTURAL DESIGN AND DRAWING OF BOTH FOUNDATION AND SUPER STRUCTURE OF THE BUILDING HAS BEEN MADE BY ME, CONSIDERING ALL POSSIBLE LOADS INCLUDING THE SEISMIC LOAD AS PER THE NATIONAL BUILDING CODE OF INDIA AND CERTIFIED THAT IT IS SAFE AND STABLE IN ALL RESPECTS.

*Signature*  
 Utpal Saha  
 UTPAL SAHA  
 B.E., M.TECH (S.E.)  
 F.I.P.S.E. (S.E.)  
 M.C.E. (S.E.)  
 M.C.E. (S.E.)  
 M.C.E. (S.E.)

SIGNATURE OF STRUCTURAL ENGINEER  
*Signature*  
 K. ROY  
 B.E. (S.E.), M.TECH (S.E.)  
 F.I.P.S.E. (S.E.)  
 M.C.E. (S.E.)  
 M.C.E. (S.E.)

CERTIFICATE OF GEOTECHNICAL ENGINEER  
 IT IS CERTIFIED THAT THE COMPREHENSIVE GEO-TECHNICAL REPORT ON SOIL INVESTIGATION HAS BEEN PREPARED BY ME FOR DESIGN AND CALCULATION OF THE FOUNDATION BY ANALYZING THE SOIL SAMPLE FOR ESTIMATING THE BEARING CAPACITY OF THE SOIL ON WHICH FOUNDATION IS EXTENDED UP TO APPROPRIATE DEPTH THAT HAS BEEN PROPOSED IN THE GEO-TECHNICAL REPORT.

*Signature*  
 Dr. M. Nayak, MD  
 Dr. (Civil), Dr. D. (Geotech)

SIGNATURE OF ARCHITECT  
 I DO HEREBY CERTIFY WITH FULL RESPONSIBILITY THAT THE BUILDING PLAN HAS BEEN DRAWN UP AS PER M.C. BUILDING RULE - 2009 AS AMENDED FROM TIME TO TIME THAT THE WIDTH OF THE ABUTTING ROAD CONFORM WITH THE PLAN AND IT IS A BUILDABLE SITE NOT A TANK OR A FILLED UP TANK. THE SITE PLAN, LOCATION PLAN AGREES WITH THE SITE. THE PLOT IS DEMARCATED BY BOUNDARY WALLS & MEASUREMENTS TALLY WITH THE DEED PLAN.

*Signature*  
 JAY PRINASH BHARAT KUMAR AGRAWAL  
 B.Arch., A.I.A.  
 Reg. No. SA/28/1/2001  
 ARCHITECT'S SL. NO. - 3374

TITLE:  
 FOURTEENTH FLOOR, FIFTEENTH FLOOR, SIXTEENTH FLOOR AND SEVENTEENTH FLOOR PLAN. PART-1A

PROJECT:  
 PLAN SHOWING CHANGES U/R-26 (G+XXI) OF K.M.C. BLDG. RULE 2009 FROM THE SANCTIONED PLAN VIDE B.P. NO. 2015080122 DATED - 31.03.16 FOR PARTLY (G+XXX) & PARTLY (G+XXXI) & PARTLY (G+XXXII) STORED RESIDENTIAL BUILDING AT PREMISES NO. 25B, A.C. BOSE ROAD, KOLKATA - 700 060.  
 WARD NO. - 09 BOROUGH - VIII & FURTHER REGULARISED U/R-26 (2a)(2b) & U/R 69A(1) of K.M.C. BLDG. RULE 2009 APPROVED BY M.B.C. DATED - 10.01.17

ARCHITECTS:  
 AGRAWAL & AGRAWAL  
 BARODA KOLKATA  
 SCALE - 1:100 DATE DEALT CHECKED  
 SHEET NO. - 09 15.02.18 SAYANTANI SUBHASIS

9

**PARTY'S COPY**

U/R-26(2a) & (2b) of  
K.M.C. Building rules  
2009...approved by  
Date: 18.09.2018  
D...18.09.2018...

KOLKATA MUNICIPAL CORPORATION  
BUILDING DEPTT.  
PLANS APPROVED U/R 26(2a) & (2b) of  
K.M.C. BUILDING RULES 2009  
B.P. No. 20180301001/2018/2018  
BR. NO. 1111  
Assistant Engineer  
Br. No. VIII

This Plan is To Be Treated As Part  
And Parcel And Contiguous To  
S. S. Plan No. 20180301001/2018/2018  
Date: 18.09.2018  
Ex. Engineer (B)  
Br. No. :- VIII

